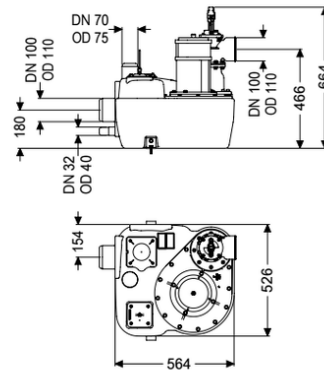
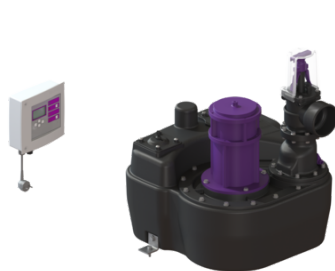


Lifting station Aqualift F Mono, Comfort, SPF 1400-S3, shut-off val



Article information

Item no.: 28648-C
GTIN: 4026092058480
Price group: 20

Advantages

- Different performance classes available
- Pressure sensor for reliable pneumatic level measurement
- Including sound absorption mat

Description

The lifting station for faecal and faecal-free wastewater is equipped with a submersible pump and a backflow preventer. The collection tank made of permanently resistant polymer (PE) offers universal connection options and has a screwed access cover.

Variant

| | |
|---|--|
| Type of system: | Single unit |
| Shut-off valve: | Shut-off valve made of polymer |
| Retaining bracket for the lift protection: | yes |
| Tested sound insulation as per test report: | yes |
| Resistant: | Resistant to saline media, wastewater from water softening systems and wastewater containing condensate from heating systems |
| Rim width: | Control unit |
| Backwater protection: | integrated |
| Pressure pipe connection: | horizontal |

General characteristics

| | |
|-------------------------|--|
| Colour: | black |
| Standard: | EN 12050-1 |
| Type of wastewater: | with sewage |
| Installation situation: | free-standing installation |
| Delivery state: | Installation-ready (electrical components, connection parts must be connected on site) |

| | |
|---|----------------|
| System type: | Mono |
| purchasable by service partner: | No |
| Dimensions | |
| Net weight: | 48,31 kg |
| Gross weight: | 50 kg |
| Length: | 564 mm |
| Width: | 525 mm |
| Height: | 664 mm |
| Packaging dimension: | length |
| Packaging dimension: | width |
| Packaging dimension: | height |
| Tank/drain body | |
| Pressure pipe connection (DN): | 100 |
| Pressure pipe connection (OD): | 110 mm |
| Connection for manual diaphragm pump (DN): | 32 |
| Venting connection (DN): | 70 |
| Distance from centre of outlet pipe to tank bottom: | 466 mm |
| Distance pipe bottom inlet to tank bottom: | 125 mm |
| Distance from centre of inlet pipe to tank bottom: | 180 mm |
| Number of inlets: | 150 mm |
| Inlet nominal size (DN): | 110 mm |
| Inlet nominal size (DN): | 100 mm |
| Inlet type: | 1 |
| Pumping volume: | 20 l |
| Tank volume: | 50 l |
| Pumping device | |
| Pump control: | SPF 1400 |
| Number of pumps: | 1 |
| Weight: | 25 kg |
| Connection type: | coded plug |
| Rated current: | 7,3 A |
| Length of mains cable for pump: | 5 m |
| Self-diagnosis system (SDS): | I |
| Insulation class: | F |
| Cos phi - power factor: | 0,98 |
| Protection class control unit: | IP 68 (3m/48h) |
| DSC: | integrated |
| Max. temperature (permanent) of conveyed material: | 40 °C |
| Max. pumping capacity: | 38 m³/h |
| Max. pumping height: | 7 m |
| Speed: | 1370 U/min |
| Power P1: | 1,6 kW |
| Power P2: | 1,1 kW |
| Operating mode: | S3 - 50 % |

| | |
|---|--------------------------------|
| Type of pump connection cable: | H07RN-F 3G 1.5 mm ² |
| Impeller type: | Multi-vane impeller |
| Free passage: | 40 mm |
| Control | |
| Control unit: | Comfort |
| Alarm sensor: | Immersion pipe |
| Level measurement instrument: | Immersion pipe |
| Type of level measurement: | pneumatic |
| Protection class probe: | IP 54 |
| Operating voltage: | 230 V |
| Connection type: | coded plug |
| Length of mains cable for control unit: | 1,4 m |
| Potential-free contact: | optional |
| GSM interface: | yes |
| USB interface: | yes |
| Log book function: | yes |
| Multi-line display: | yes |
| Battery buffering: | yes |
| Self-diagnosis system (SDS): | yes |
| Rated current: | 7,3 A |