

# Grease separators for underground installation

## Euro G Products

Illustration	NS	Weight Class D	Installation depth D in mm	Cover class A/B Article #	Cover class D Article #
	NS 7*	450 kg	745 to 1180	<b>93 007/120 B</b>	<b>93 007/120 D</b>
	NS 10*	480 kg	755 to 1190	<b>93 010/120 B</b>	<b>93 010/120 D</b>
	NS 15*	630 kg	755 to 1190	<b>93 015/120 B</b>	<b>93 015/120 D</b>
	NS 20*	670 kg	750 to 1185	<b>93 020/120 B</b>	<b>93 020/120 D</b>
	NS 25	765 kg	810 to 1245	<b>93 925/120 B</b>	<b>93 925/120 D</b>
	NS 30	765 kg	810 to 1245	<b>93 930/120 B</b>	<b>93 930/120 D</b>
	NS 35	765 kg	660 to 1095	<b>93 935/120 B</b>	<b>93 935/120 D</b>

**Delivery:** System completely assembled.

**Accessories** see page 281-282:  
Sampling chamber, extension section, direct disposal, *SonicControl*.  
Pumping stations see chapter 3 "lifting stations".

\* **Certification: Z-54.1-440** (NS 7 - 20)  
Change pending

### Grease separator Euro G NS 7/10/15/20/25/30/35

in accordance with EN 1825 and DIN 4040-100, made of polyethylene

#### For underground installation

Upper section made of polymer, height and level adjustment, with cover class A/B, D in accordance with EN 124, made of cast iron (can be driven over by cars and trucks), sealed odour-tight, incl. lift-out key.

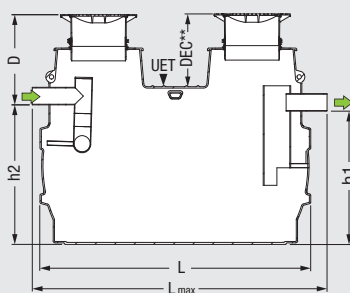
for ground installation:  
frost-free depth

Minimum installation depth achieved by sawing the upper section as required

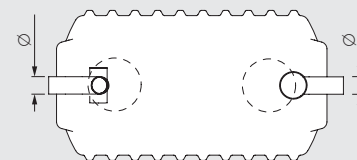
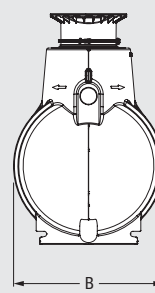
Installation is possible with groundwater up to the upper edge of the tank (UET).

A load distribution plate must be provided for class D.

Further nominal sizes on request



D = Installation depth  
Ø = Outer diameter



\*\*DEC = Depth of earth coverage

Class D = 700 mm ≤ DEC ≤ 1500 mm  
Class A/B = 700 mm ≤ DEC ≤ 1800 mm

Nominal size	Ø	L	B	h1	h2	Sludge	Grease	Total (incl. water)	D-DEC	Lmax mm
NS 7	160	2390	1200	1030	1100	700 l	1100 l	1800 l	155 mm	2540
NS 10	160	2910	1200	1030	1100	1000 l	1600 l	2600 l	155 mm	3060
NS 15	200	2590	1760	1550	1620	1500 l	2800 l	4300 l	180 mm	2780
NS 20	200	3110	1760	1550	1620	2000 l	3800 l	5800 l	180 mm	3300
NS 25	200	3470	2010	1550	1650	2500 l	5300 l	7800 l	480 mm	
NS 30	250	3470	2010	1550	1650	3000 l	4800 l	7800 l	480 mm	
NS 35	250	3470	2010	1700	1800	3500 l	4800 l	8300 l	330 mm	

## Direct disposal / disposal chamber Accessories

Illustration	Article description	Illustration	Article #
	<b>Direct disposal for grease separators</b> <input type="checkbox"/> without disposal chamber		
	<input type="checkbox"/> Disposal connection right	<b>1</b>	<b>917 419.00</b>
	<input type="checkbox"/> Disposal connection left	<b>1</b>	<b>917 419.50</b>
	<b>Direct disposal for grease separators</b> <input type="checkbox"/> including disposal chamber Ø 400		
	<input type="checkbox"/> Disposal connection right	<b>1 2</b>	<b>917 420.00</b>
	<input type="checkbox"/> Disposal connection left	<b>1 2</b>	<b>917 420.50</b>
	<b>Disposal chamber Ø 400</b>	<b>2</b>	<b>917 422</b>
	<b>Joint and connection set made of polyethylene</b>	-	<b>917 421</b>

### Technical note:

Weather-related influences or cooling of the tanks during the installation phase (caused by filling with cold water) can lead to deviations in dimensions from the catalogue specifications in the case of cisterns and separators installed in the ground.