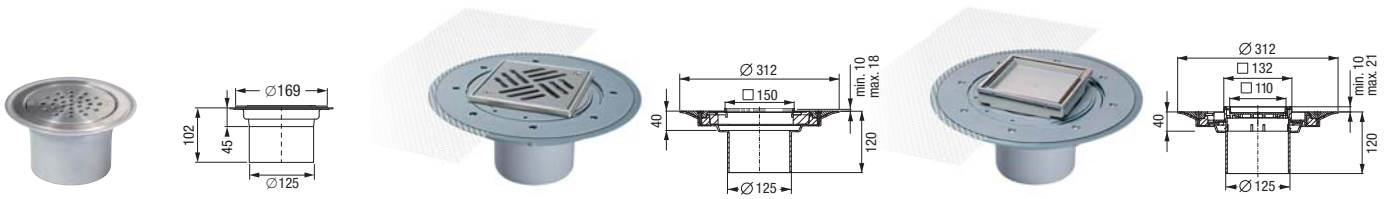


Project drains *Ecoguss* and *Practicus* System 125

Upper section for PVC floorings

Variofix shallow bed upper sections



in stainless steel AISI 304

with cover \varnothing 133 mm
in stainless steel AISI 304,
class L 15, screwed.
For use with 1-4 mm PVC / vinyl flooring.

Art. # 59 192

Custom made product (delivery time on request)

in ABS, incl. mesh fabric

with slotted cover/rim \square 138 mm
in stainless steel, class L 15,
screwed.
For tile thickness of 8-16 mm.

AISI 304 Art. # 48 963

AISI 316L Art. # 48 206

with recessed polymer cover
for on-site tiling \square 110 mm
rim in stainless steel,
class K 3, with locking system

AISI 304 Art. # 48 906

AISI 316L Art. # 48 208

Upper sections



in ABS...

with slotted cover/rim
 \square 138 mm

in stainless steel
screwed, class L 15

AISI 304 Art. # 48 951

AISI 316L Art. # 48 205

in ABS...

with slotted cover
 \square 120 mm

in stainless steel AISI 304
class K 3

Art. # 48 165

in ABS...

with slotted cover \square 138 mm, class K 3,
in stainless steel,
screwed

AISI 304 Art. # 48 950

AISI 316L Art. # 48 209

in ABS,
black

Art. # 48 193

in ABS, tileable...

\square 110 mm, made of polymer, class K 3
with rim
in stainless steel

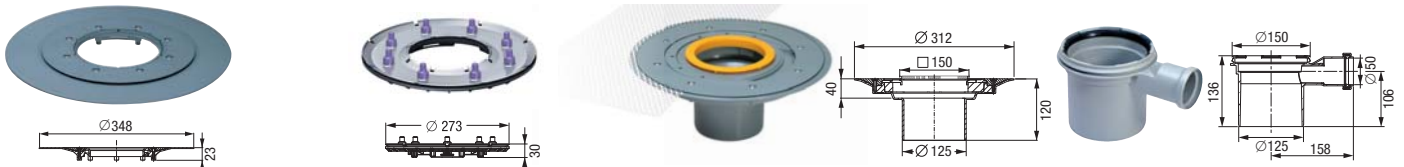
AISI 304 Art. # 48 211

AISI 316L Art. # 48 207

with rim
in polymer

Art. # 48 210

Accessories



Glue flange with counter flange

in ABS, \varnothing 348 mm
(also for compound seal)

Art.Nr. 48 410

can be combined with drain bodies
and extension sections

Pressure sealing flange

in stainless steel AISI 304, \varnothing 273 mm,
with seeping water opening

Art. # 48 402

can be combined with drain bodies
and extension sections

Intermediate section with glue flange

in ABS, for shallow bed gasket
incl. mesh fabric

Art. # 48 900

Extension section

in PP, with lip seal
without lateral inlet
Art. # 48 987

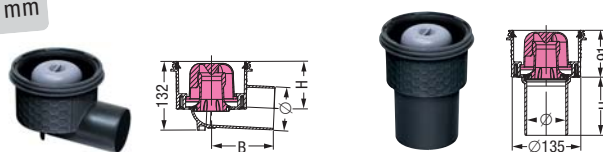
with lateral inlet \varnothing 50
Art. # 48 989

Mesh fabric
for Art. # 48 410
Art. # 046-056

Elastomer waterproof membrane in NBR
for Art. # 48 402
Art. # 48 981

Drain bodies *Ecoguss* and *Practicus*

All drain bodies:
1.8 l/sec flow rate
Sealing water height 50 mm



Ecoguss

with removable odour trap

Lateral outlet			
\varnothing	B	H	Article #
58	245	120	48 358
78	134	109	48 378
83	134	108	48 383
110	148	92	48 311
Vertical outlet			
58	100		48 458
78	110		48 478
83	110		48 483
110	110		48 411

Modular system with covers in stainless steel AISI 304 / AISI 316L

Variofix shallow bed upper sections with design cover



in ABS, incl. mesh fabric

design covers □ 120 mm and rim in stainless steel, class K 3 / L 15. For tile thickness of 8-21 mm, with or without Lock & Lift System

			Kessel (Cl. L 15)	Oval (Cl. L 15)	Spot (Cl. K 3)	Cross (Cl. K 3)	Festival (Cl. K 3)	Parade (Cl. K 3)	Slot (Cl. K 3)	Sticks (Cl. K 3)
with Lock & Lift...	AISI 304	Art. #	48 904	48 905	48 621	48 613	48 615	48 624	48 619	48 617
	AISI 316L	Art. #	48 204	-	-	-	-	-	-	-
without Lock & Lift...	AISI 304	Art. #	48 625	48 626	48 620	48 612	48 614	48 623	48 618	48 616

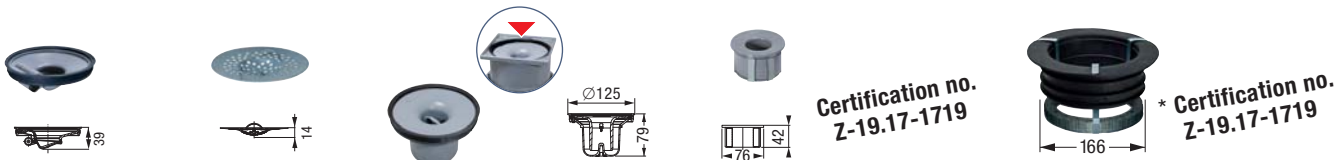
Upper section with design cover



in ABS

design covers □ 120 mm and rim in stainless steel, class K 3 / L 15 with or without Lock & Lift System

			Kessel (Cl. L 15)	Oval (Cl. L 15)	Spot (Cl. K 3)	Cross (Cl. K 3)	Festival (Cl. K 3)	Parade (Cl. K 3)	Slot (Cl. K 3)	Sticks (Cl. K 3)
with Lock & Lift...	AISI 304	Art. #	48 201	48 202	48 221	48 213	48 215	48 224	48 219	48 217
	AISI 316L	Art. #	48 203	-	-	-	-	-	-	-
without Lock & Lift...	AISI 304	Art. #	48 225	48 226	48 220	48 212	48 214	48 223	48 218	48 216



Multistop

odour, foam, rodent and insect stop
Art. # **48 500**

Hair filter

made of polymer
Art. # **48 700**

Odour trap

for all upper sections System 125, sealing water height 50 mm according to norm
Art. # **48 600**

Fire-Kit Fire protection insert

Only for *Ecoguss / Practicus* drains with vertical outlet and odour trap
 Certification no. Z-19.17-1719
 Ø **58/78/83** Art. # **48 099**
 Ø **50/75** Art. # **48 099**
 Ø **110** Art. # **48 100**

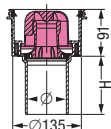
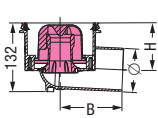
Quick-Fit the passage seal

for core drillings for drain bodies with vertical outlet
 *with fire protection Art. # **48 990**
 (only in combination with *Fire-Kit* protection insert)
 without fire protection Art. # **48 991**

Sludge trap

Art. # **48 168** see page 147

All drain bodies:
1.8 l/sec flow rate
Sealing water height 50 mm



Practicus in PP

with removable odour trap

Lateral outlet

Ø	B	H	Article #
50	245	120	45 150
75	134	109	45 170
110	148	92	45 110
Vertical outlet			
50		100	45 250
75		110	45 270
110		110	45 210



Insulating body

fits all *Ecoguss / Practicus* drain bodies with vertical outlet
Art. # **48 952**